

Directions to Mimi's Trail and the Zega Lockatong Preserve

From Frenchtown, take Route 29 south. Pass Raven Rock/Bull's Island. Turn left at Federal Twist Road. Take your next right onto Rosemont Raven Rock Road. The preserve is on the left before the Steel Bridge.

From Stockton, take Route 29 north. Turn right at Federal Twist Road. Take your next right onto Rosemont Raven Rock Road. The preserve is on the left before the steel bridge.

From Route 519 heading south: just after Rosemont Café and the curve in the road, bear right on Raven Rock Road (leaving 519). You will pass the county's Wescott Preserve on your right. Cross the steel bridge and the preserve will be on your right.

For directions using Mapquest or Yahoo, search for "Raven Rock Road, Stockton, NJ"

Why "Mimi's" Trail?

Mimi Conklin Upmeyer was a dedicated volunteer for the environment, and served as the Hunterdon Land Trust's first administrator. Mimi also served many other organizations. As anyone who knew Mimi would say, she was a warm and sincere individual whose concern for others was tremendous. Mimi passed away in 2003 and she is surely missed.

Why Ralph Peters' Trail?

Shortly before his passing in 2006 Ralph Peters sold 102 acres to the Hunterdon Land Trust Alliance to enlarge this preserve. He had a long standing commitment to land preservation. He permanently protected his ranch located near Helena, Montana with a conservation easement. He had also served on the board of the New Jersey Conservation Foundation. Mr. Peters said, "I felt very deeply that this land should be preserved for future generations."

Welcome to the Zega Lockatong Preserve, Mimi's Trail and Ralph Peters' Trail

This property is owned and maintained by the Hunterdon Land Trust Alliance with help from its members. Visitors are welcome from dawn to dusk. This preserve serves as a haven for Hunterdon County's native plants and animals. To ensure the tranquility and natural integrity of our preserve for future generations we ask you to follow a few rules:

- * Stay on the marked trail
- * Leash your dog
- * Leave nothing behind
- * Do not disturb plants
- * No bikes, horses or motorized vehicles
- * Camping and fires are prohibited
- * Be considerate of neighbors, park in designated areas

Enjoy the picnic area and linger at the memorial bench along the trail. Contracted hunting occurs here to maintain sustainable populations of deer, so take proper precautions during bow hunting season, September through February (there is no hunting on Sundays). Check our website at www.hlta.org for updates.

Support this preserve and others like it

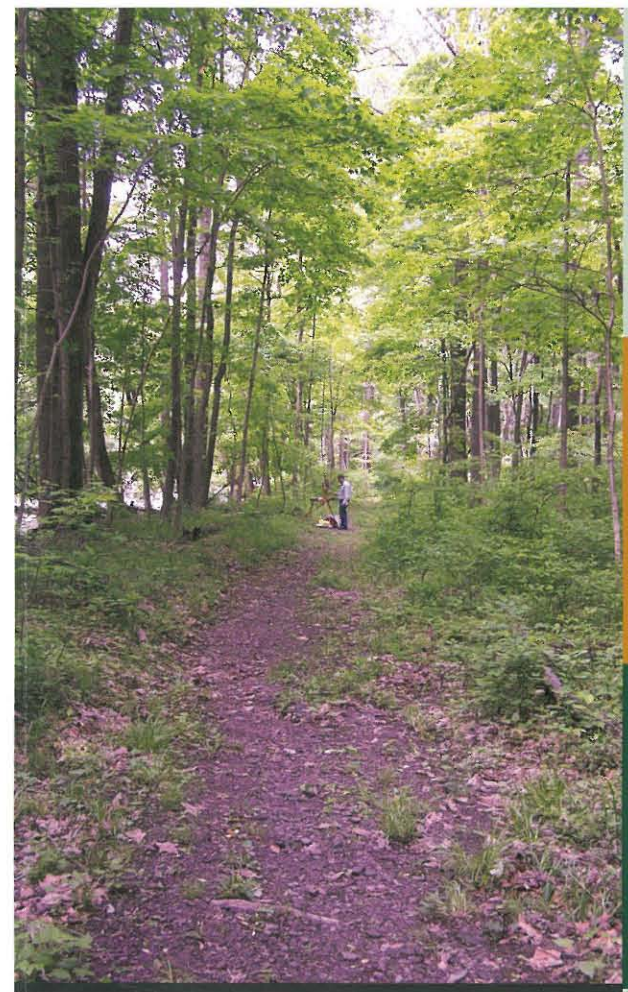
For more information and to become a Hunterdon Land Trust Alliance member, visit www.hlta.org or call us at 908-237-4582.

With thanks

The Hunterdon Land Trust Alliance gratefully acknowledges these groups and individuals who made these trails and the Zega Lockatong Preserve possible:

- * Delaware Township
- * William and Margaret Henderson
- * Hunterdon County Park System
- * The Merck Company Foundation
- * The National Recreational Trails Grant Program
- * New Jersey Green Acres Program
- * Ralph and Ann Marie Peters
- * Anthony Zega

And many, many volunteers and supporters!



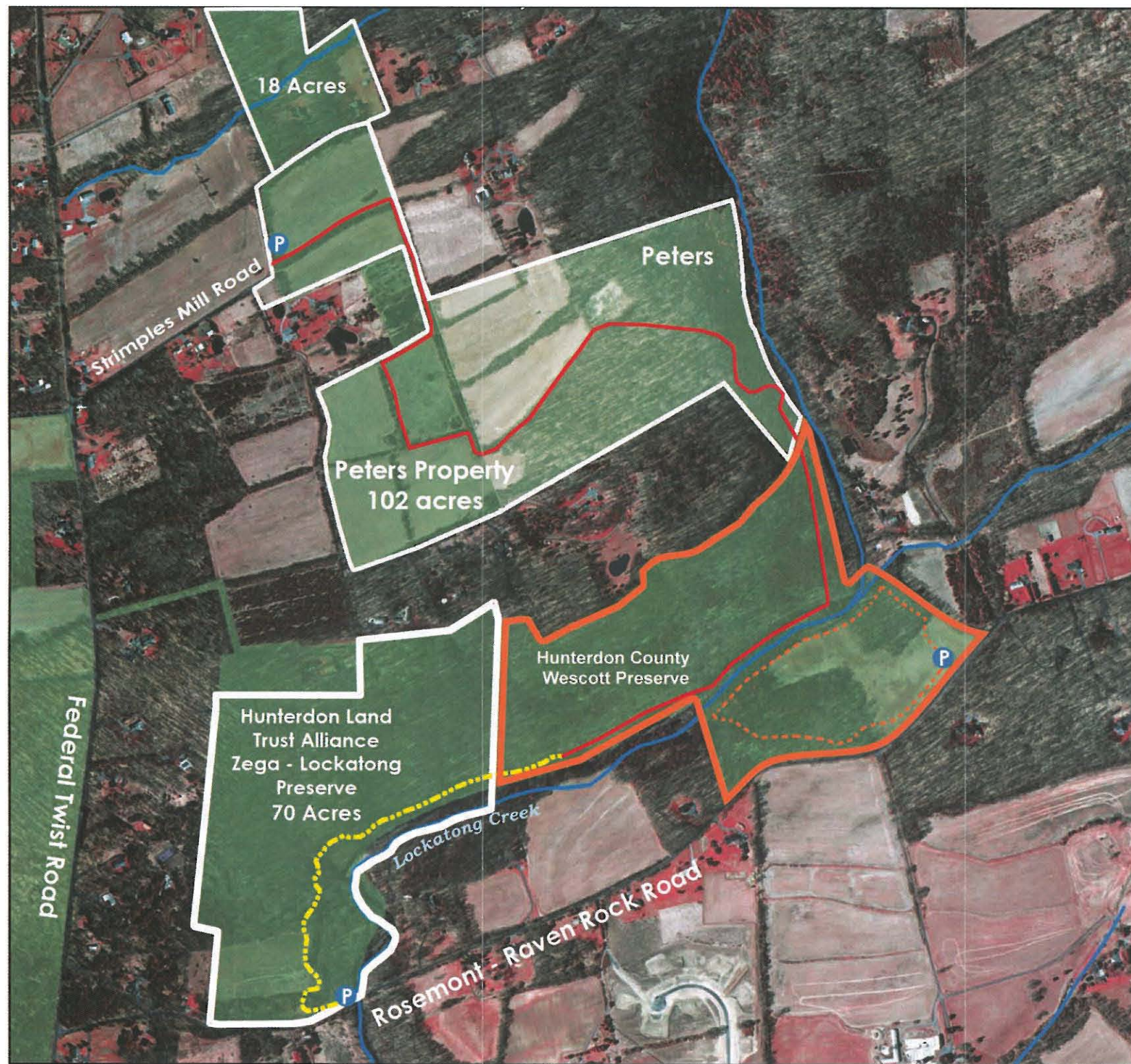
Mimi's Trail and the Ralph Peters' Trail through the Zega Lockatong Preserve



Hunterdon Land Trust Alliance

56 Main St., Suite 2E
Flemington, NJ 08822
(908) 237-HLTA (4582)
www.hlta.org

 **Hunterdon Land Trust Alliance**
Lockatong Greenbelt
190 acres and growing



-  HLTA Preserved Land
-  Wescott Preserve
-  Ralph Peters Trail
-  Mimi's Trail
-  Other Trails
-  Streams
-  Parking Areas

