



Welcome to Holland Highlands Preserve

Holland Highlands Preserve, a 62-acre property owned by Hunterdon Land Trust, connects to a Holland Township park to form a 150-acre public preserve on the southern shoulder of the Musconetcong Mountain. The preserve offers an extensive network of trails to enjoy.

As you explore the trails, you will see a diversity of ferns, skunk cabbage, and mayapple in the riparian areas. Woodpeckers and other wildlife take refuge in snags in the forest. The preserve protects the headwaters of Spring Mills Brook, a tributary to Hakiwokake Creek, and is within the Delaware River Watershed.

Hunterdon Land Trust is proud to steward Holland Highlands Preserve to enhance water quality, wildlife habitat, and public enjoyment.

Share your discoveries on social media
@hunterdonlandtrust, eBird, and
iNaturalist!

With Thanks

Hunterdon Land Trust gratefully acknowledges those who made this preserve possible:

- The Saeger Family
- The Kolonia Family
- Philipsburg Riverview Organization
- Victoria Foundation
- Holland Township
- Hunterdon County Open Space Trust Fund
- New Jersey Green Acres Program

Preserve Rules

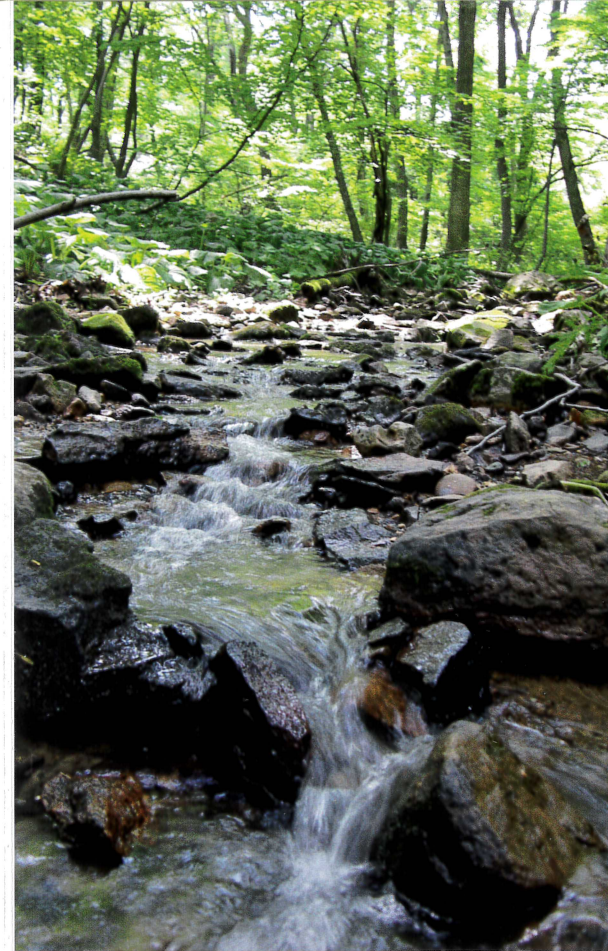
- Open from sunrise to sunset
- Stay on marked trails
- Carry out trash
- Leave all plants, animals, rocks, and artifacts for all visitors to enjoy
- Leash pets and carry out waste
- No alcoholic beverages, camping, fires, or motorized vehicles
- Hunting during NJ deer hunting season only by permission from Hunterdon Land Trust

Join Us

- Volunteer as a Preserve Steward and help us to care for these special places! Email info@hunterdonlandtrust.org to learn more.

Hunterdon Land Trust is a nonprofit organization dedicated to preserving land with ecological, agricultural, scenic, recreational, and community values to ensure meaningful land conservation throughout Hunterdon County. Learn more at www.hunterdonlandtrust.org or call us at 908-237-4582.

Funding for trail guide provided by the National Park Service's Lower Delaware Wild & Scenic Program.



Holland Highlands Preserve

Shire and Andersen Roads
Milford, NJ 08848

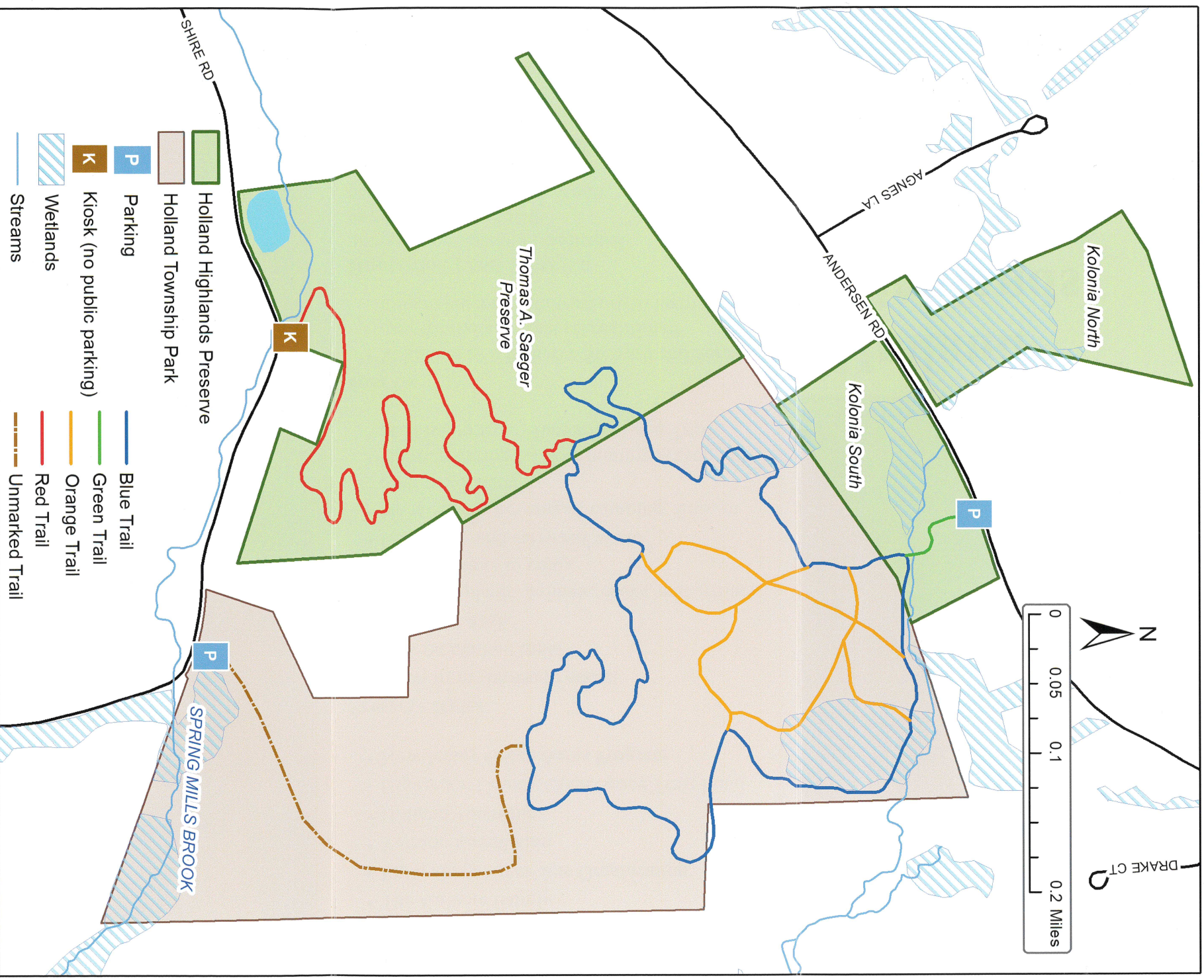


Hunterdon Land Trust

111 Mine Street
Flemington, NJ 08822
908-237-4582

www.hunterdonlandtrust.org

HOLLAND HIGHLANDS PRESERVE



Map created May 2023 (c) Hunterdon Land Trust. This map was developed using Hunterdon County, New Jersey, Geographic Information System digital data, but this secondary product has not been verified by Hunterdon County and is not county-authorized.