

Photo credit: Jill Dodds



Welcome to Zega-Lockatong Preserve

Zega-Lockatong Preserve, a 69-acre property owned by Hunterdon Land Trust, is in the Delaware River Watershed. This preserve is part of a larger greenway of permanently preserved land along Lockatong Creek.

Mimi's Trail, named for dedicated Hunterdon Land Trust supporter Mimi Upmeyer, leads to a meadow which supports a diversity of pollinators. The trail then descends to the floodplain of Lockatong Creek, a crucial area for water quality, flood prevention, and wildlife habitat.

Hunterdon Land Trust is proud to steward Zega-Lockatong Preserve to enhance natural resource conservation and public enjoyment.

**Share your discoveries on social media
@hunterdonlandtrust, eBird, and
iNaturalist!**

With Thanks

Hunterdon Land Trust gratefully acknowledges those who made this preserve possible:

- Margaret and William Henderson
- L. Anthony Zega
- Delaware Township
- Hunterdon County Open Space Trust Fund
- New Jersey Green Acres Program

Preserve Rules

- Open from sunrise to sunset
- Stay on marked trails
- Carry out trash
- Leave all plants, animals, rocks, and artifacts for all visitors to enjoy
- Leash pets and carry out waste
- No alcoholic beverages, camping, fires, or motorized vehicles
- Hunting during NJ deer hunting season only by permission from Hunterdon Land Trust

Join Us

- Volunteer as a Preserve Steward and help us to care for these special places! Email info@hunterdonlandtrust.org to learn more.

Hunterdon Land Trust is a nonprofit organization dedicated to preserving land with ecological, agricultural, scenic, recreational, and community values to ensure meaningful land conservation throughout Hunterdon County. Learn more at www.hunterdonlandtrust.org or call us at 908-237-4582.



Funding for trail guide provided by the National Park Service's Lower Delaware Wild & Scenic Program.



Zega- Lockatong Preserve

110 Raven Rock Rosemont Road
Stockton, NJ 08559

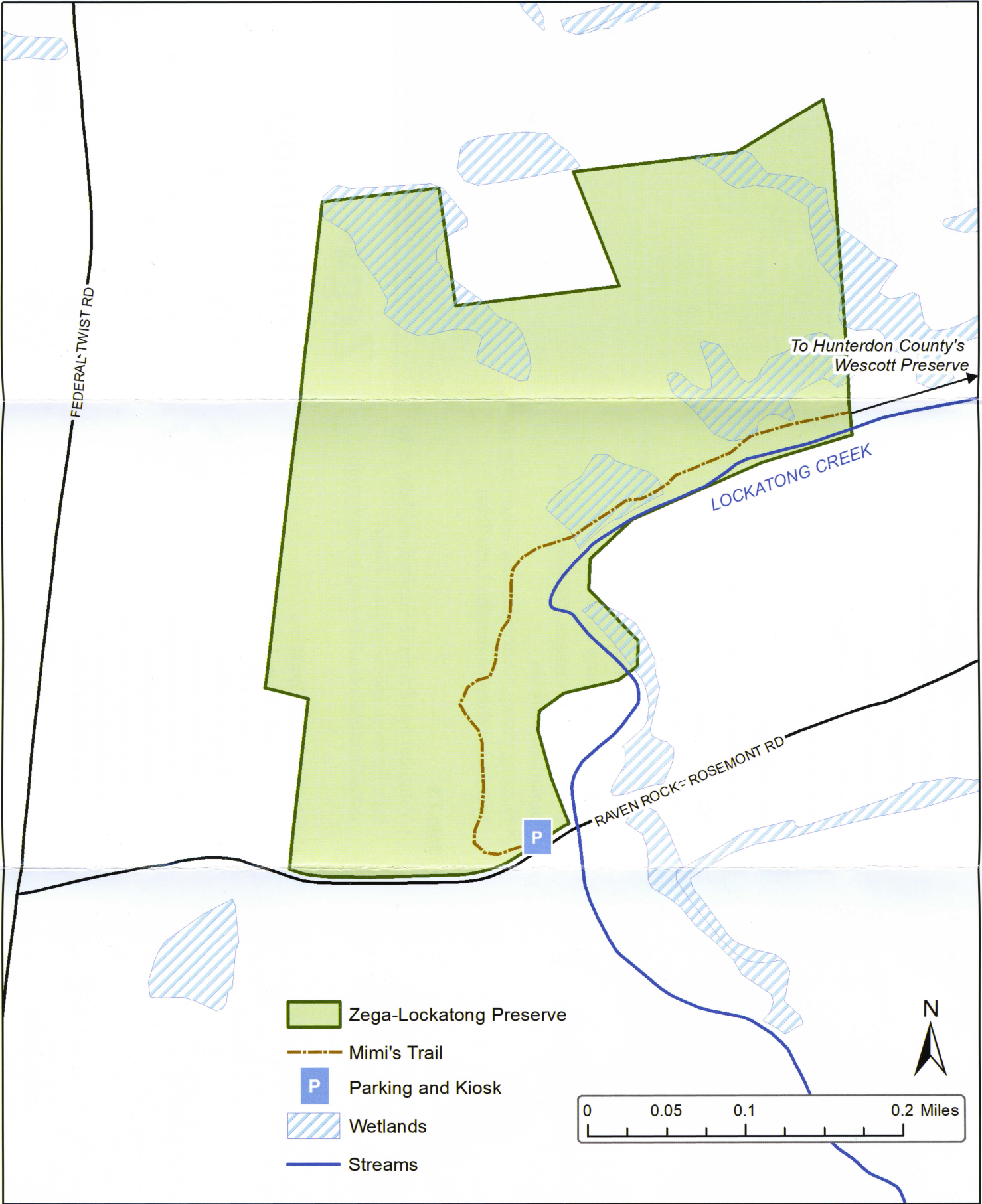


Hunterdon Land Trust

111 Mine Street
Flemington, NJ 08822
908-237-4582

www.hunterdonlandtrust.org

ZEGA-LOCKATONG PRESERVE



Map created May 2023 (c) Hunterdon Land Trust. This map was developed using Hunterdon County, New Jersey, Geographic Information System digital data, but this secondary product has not been verified by Hunterdon County and is not county-authorized.